

Jubilee Lake Trail

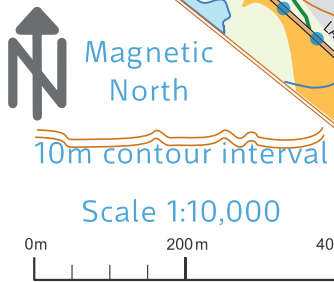
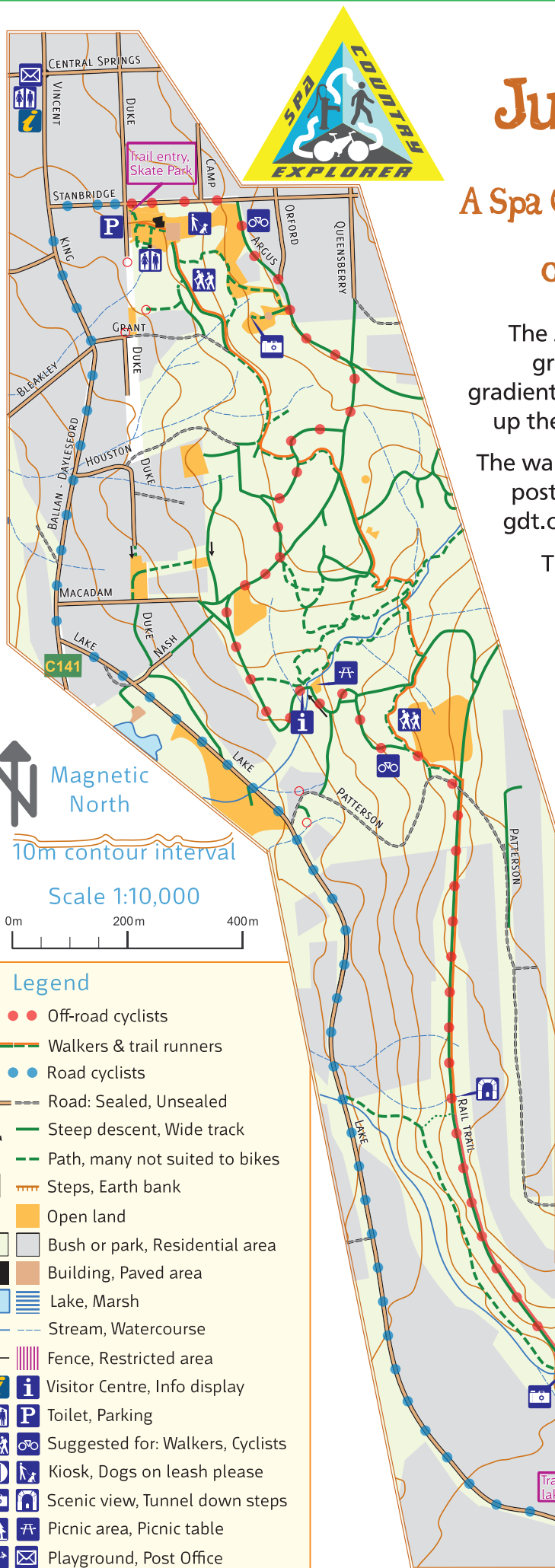
A Spa Country Explorer recreation map for walkers, trail runners, off-road and on-road cyclists

The Jubilee Lake Trail is about 3km for all 3 routes. It is graded Easy for off-road cycling which means gentle gradients with some moderately steep sections. That sums up the walk route also. The road cycle route is Very Easy.

The walk route follows the revised Lerderderg Track (grey posts with Great Dividing Trail logo) - find out more at gdt.org.au. On and off-road cycle routes are unsigned.

The first half of the off-road cycle trail traverses the Cornish Hill Reserve. More on Cornish Hill at www.cornishhilldaylesford.com or the Visitor Information Centre.

For nearby trail adventures on foot or mountain bike, check out the Spa Country Explorer maps at spacountryexplorer.org.au



- Legend**
- ● ● Off-road cyclists
 - — — Walkers & trail runners
 - ● ● Road cyclists
 - — — Road: Sealed, Unsealed
 - — — Steep descent, Wide track
 - — — Path, many not suited to bikes
 - ▬▬▬ Steps, Earth bank
 - Open land
 - Bush or park, Residential area
 - Building, Paved area
 - Lake, Marsh
 - — — Stream, Watercourse
 - — — Fence, Restricted area
 - 📍 Visitor Centre, Info display
 - 🚻 Toilet, Parking
 - 🚶🚴 Suggested for: Walkers, Cyclists
 - 📺🐕 Kiosk, Dogs on leash please
 - 🏠📉 Scenic view, Tunnel down steps
 - 🍷🪵 Picnic area, Picnic table
 - 🏡📧 Playground, Post Office

An initiative of

and

for youth outdoor sport and recreation
spacountryexplorer.org.au

OCAD⁺
the smart software for cartography
ocad.com.au

COPYRIGHT: VicMap topo data © The State of Victoria 2016 licensed under creativecommons.org/licenses/by/4.0/. Non-VicMap information © Orienteering Victoria Inc & MapSport Cartographic 2016. Effort has been made to ensure accuracy of this map commensurate with its purpose however it is the user's responsibility to manage its relevance and flaws at time of use. None of the afore-mentioned parties shall be responsible or liable for any loss or damage whatsoever arising from the use of this map or area.